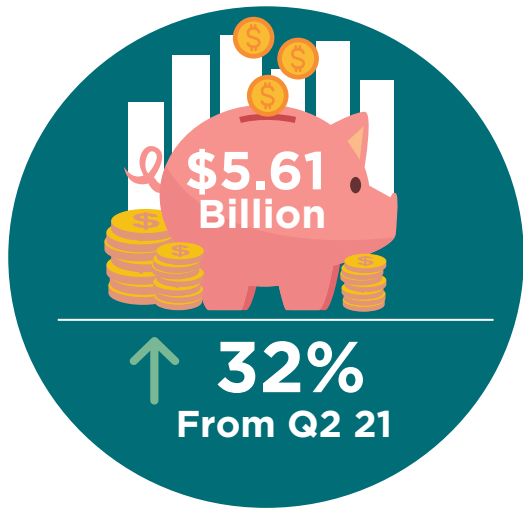




2022 SECOND QUARTER REPORT

TEXAS MARKET ACTIVITY

TOTAL Q2 2022 PREMIUM



PREMIUM & POLICY COUNT

	Q2	2022	Q2 21
Total Premium	\$ 3,407,932,527	\$ 5,608,679,788	32%
Policy Count	189,983	358,904	1%
Average Cost Per Policy	\$ 17,938	\$ 15,627	31%

	Q2
Taxes	\$ 165,060,370
Stamping Fees	\$ 2,585,830

TOP INSURERS BY PREMIUM

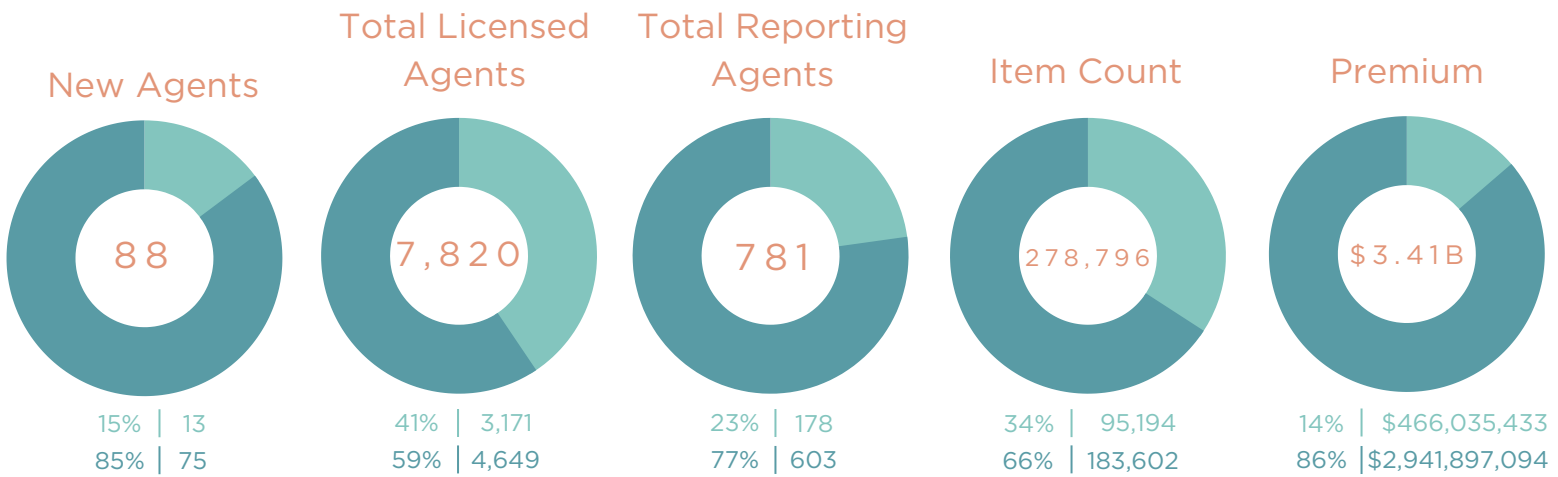
Q2 22 RANK	INSURER	PREMIUM	% OF TOTAL PREMIUM	Q2 21 RANK
1	Underwriters at Lloyd's London	\$ 538,820,696	16 %	1
2	Lexington Insurance Company	\$ 131,396,775	4 %	4
3	Evanston Insurance Company	\$ 117,975,316	4%	6
4	National Fire & Marine Ins Co	\$ 106,134,781	3 %	2
5	Westchester Surplus Lines Ins Co	\$ 98,989,451	3 %	3

TOP COVERAGES BY PREMIUM

<p>Property Commercial Fire/ Allied Lines</p> <p>\$1.08B Premium</p> <p>32% of Total Premium</p>	<p>Excess/ Umbrella</p> <p>\$599M Premium</p> <p>18% of Total Premium</p>	<p>General Liability - Premises Liab Comm</p> <p>\$423M Premium</p> <p>12% of Total Premium</p>	<p>Property - Homeowners</p> <p>\$171M Premium</p> <p>5% of Total Premium</p>	<p>Auto - Commercial Liability</p> <p>\$137M Premium</p> <p>4% of Total Premium</p>
--	---	---	---	---

AGENT ACTIVITY

RESIDENT
NON-RESIDENT

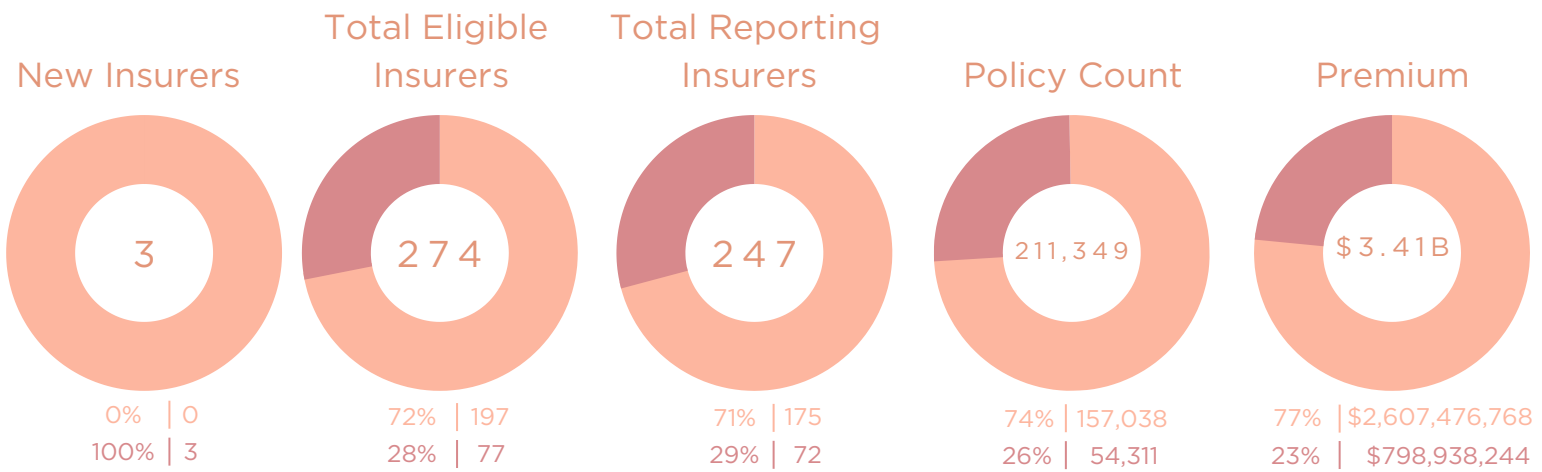


FILING METHOD STATISTICS

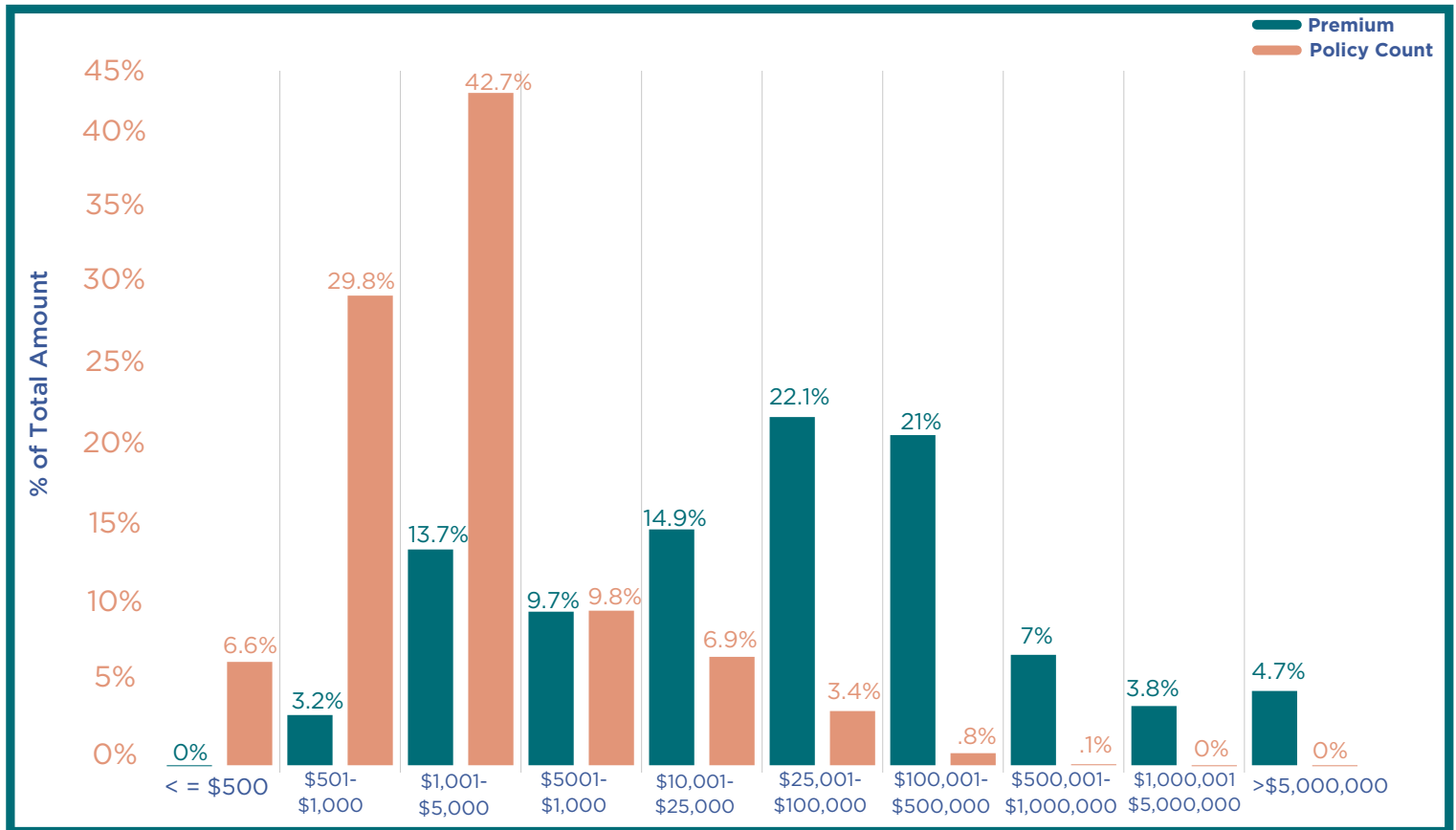
	Manual Filing	Automated Filing	Online Filing	SMART Online Filing	SMART Automated Filing	Total
Item Count	3,576	164,519	87,356	21,691	1,654	278,796
Premium	\$ 51M	\$ 1.60B	\$ 1.09B	\$ 664M	\$ 617,003	\$ 3.41 B
Item Count %	1%	59%	31%	8%	1%	
Premium %	2%	47%	32%	19%	0%	

INSURER ACTIVITY

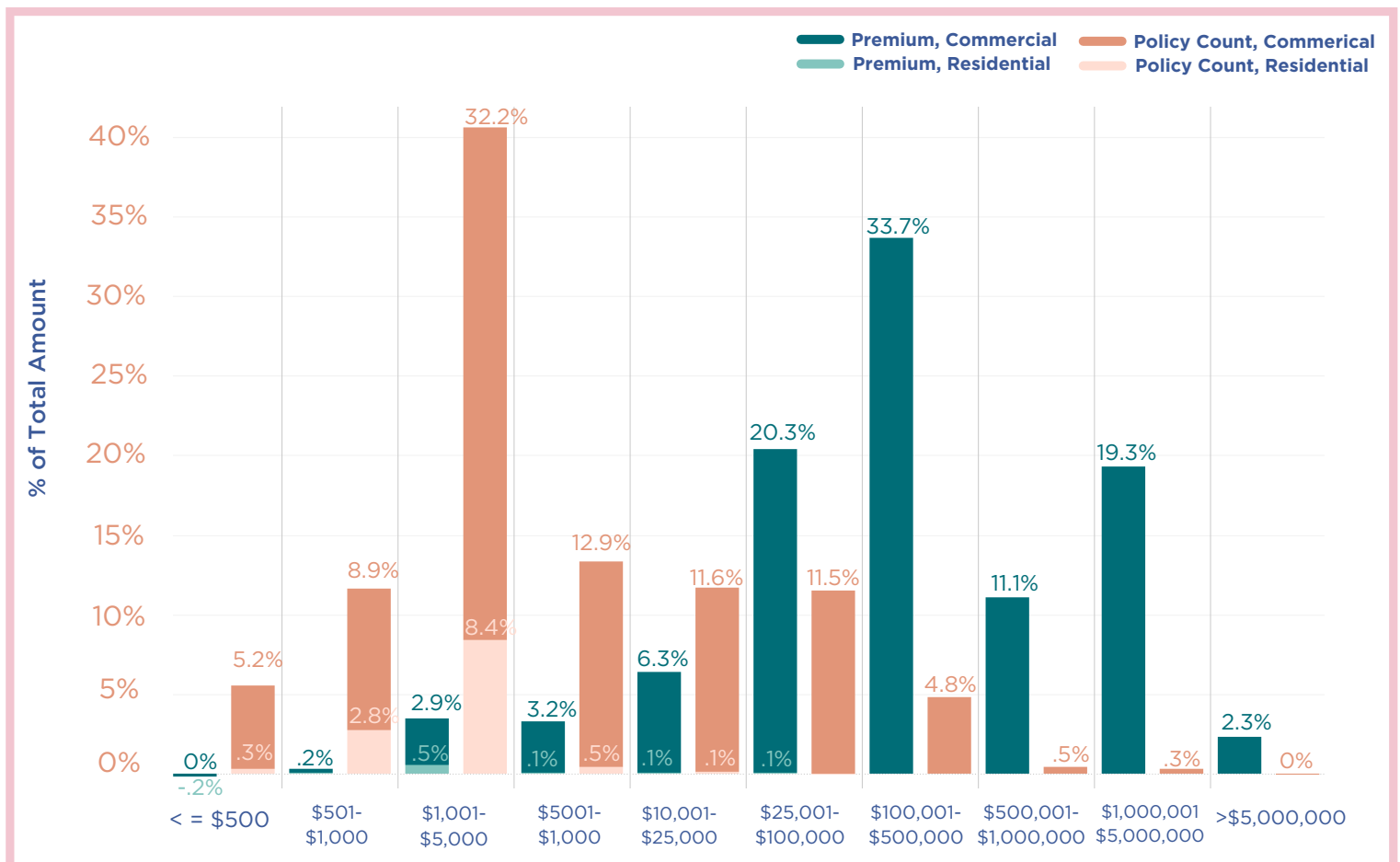
US DOMICILED
NON-US DOMICILED



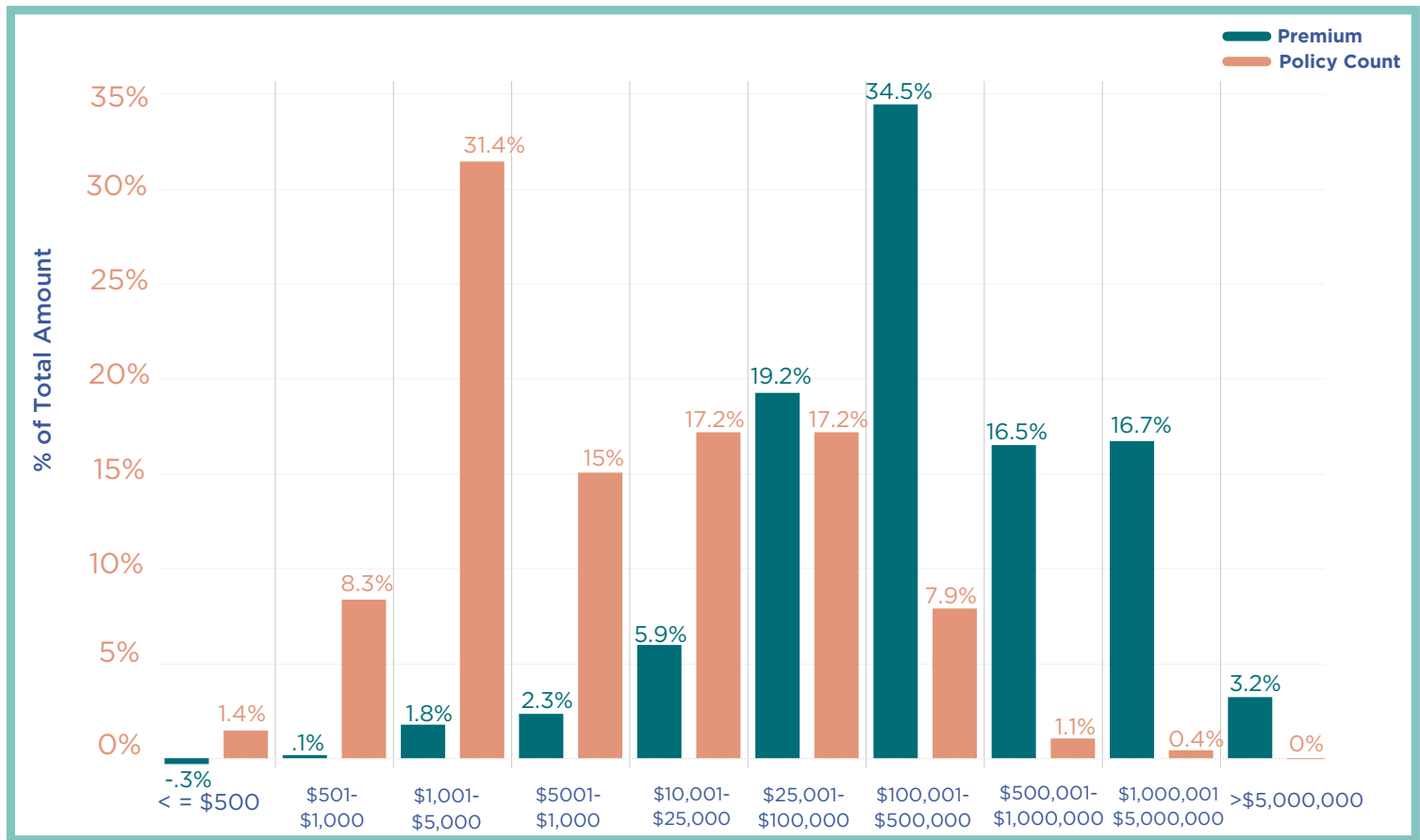
Q2 2022 POLICY STRATIFICATION FOR COMMERCIAL GENERAL LIABILITY



Q2 2022 POLICY STRATIFICATION FOR FIRE/ALLIED LINES



Q2 2022 POLICY STRATIFICATION FOR EXCESS/UMBRELLA



SMART ANNOUNCEMENTS!

Did you know SLTX's current Electronic Filing System (EFS) is quickly approaching end of tenure as the online filing system for Texas and is being replaced with an updated and much more user-friendly system called "SMART"? Users express ease of use and process improvements made such as elimination of batches, enhanced coverage and class selections, and elimination of inserting tax, stamping fee, and total gross amounts manually.

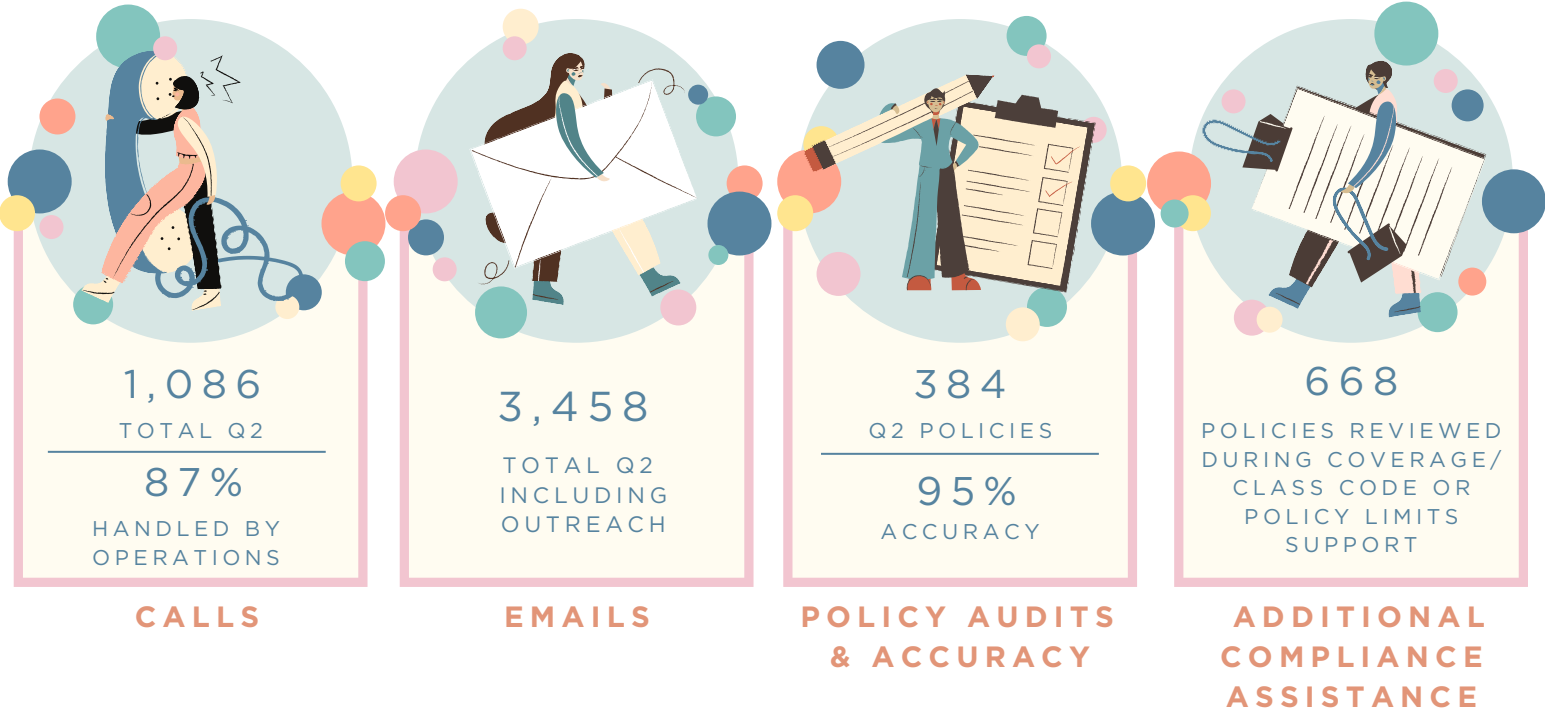
Interested in attending a **group** training session? You can select a session by following this [link](#). You may also request an **individualized** training session tailored to your agency's business/workflows [here](#).

Please contact the SLTX Tech Support team by email or phone at (512) 531-1880 or (800) 681-5848 with any questions.

We look forward to seeing you at an upcoming SMART Education session!

SERVICES

COMPLIANCE REVIEW & ASSISTANCE



COMMUNICATIONS



FOLLOW & SUBSCRIBE

